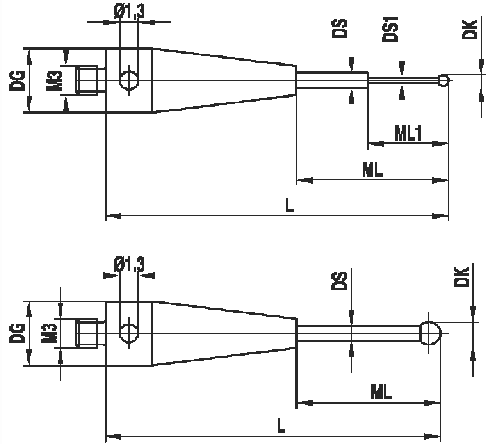


Carbide styli XXT

Thread M3
Material Titanium base, carbide stem, ruby ball



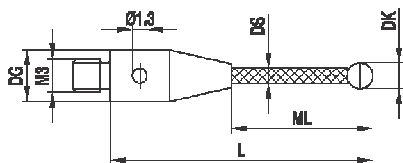
Pos.	itp Order No	analogue Zeiss	Renishaw Order No	DK	ML1 ML	DG D	L	DS1 DS	EAL B	Weight g	* * *
1	TH M3 003 05 013	626113-0030-013	-	0,3	2,3/4,0	5,0	13,0	0,2/1,0		0,62	****
2	TH M3 003 05 020	626113-0030-020	-	0,3	2,3/11,0	5,0	20,0	0,2/1,0		0,69	****
3	TH M3 005 05 013	626113-0050-013	-	0,5	2,3/4,0	5,0	13,0	0,3/1,0		0,61	****
4	TH M3 005 05 020	626113-0050-020	-	0,5	2,3/11,0	5,0	20,0	0,3/1,0		0,69	****
5	TH M3 006 05 014	626113-0060-014	-	0,6	4,6/5,0	5,0	14,0	0,4/1,0		0,61	****
6	TH M3 006 05 020	626113-0060-020	-	0,6	4,6/11,0	5,0	20,0	0,4/1,0		0,68	****
7	TH M3 008 05 014	626113-0080-014	-	0,8	5,0	5,0	14,0	0,6		0,62	****
8	TH M3 008 05 020	626113-0080-020	-	0,8	4,8/11,0	5,0	20,0	0,6/1,0		0,69	****
9	TH M3 008 05 034	626113-0080-034	-	0,8	4,1/25,0	5,0	34,0	0,6/1,0		0,80	****
10	TH M3 010 05 014	626113-0100-014	-	1,0	5,0	5,0	14,0	0,8		0,63	****
11	TH M3 010 05 020	626113-0101-020	-	1,0	5,1/11,0	5,0	20,0	0,6/1,0		0,70	****
12	TH M3 010 05 020/0,8	626113-0100-020	-	1,0	5,0/11,0	5,0	20,0	0,8/1,0		0,69	****
13	TH M3 010 05 020/11,0	626103-0103-020	-	1,0	11,0	5,0	20,0	0,8		0,70	****
14	TH M3 010 05 030	626113-0100-030	-	1,0	5,0/21,0	5,0	30,0	0,8/1,0		0,80	****
15	TH M3 010 05 040	626113-0100-040	-	1,0	5,0/31,0	5,0	40,0	0,8/1,0		1,5	****
16	TH M3 015 05 014	626113-0150-014	-	1,5	5,0	5,0	14,0	1,0		0,65	****
17	TH M3 015 05 020	626113-0150-020	-	1,5	11,0	5,0	20,0	1,0		0,72	****
18	TH M3 015 05 030/9,0	626113-0151-030	-	1,5	21,0	5,0	30,0	1,0		0,84	****
19	TH M3 015 05 030	626113-0150-030	-	1,5	22,5	5,0	30,0	1,0		0,90	****
20	TH M3 015 05 040	626113-0151-040	-	1,5	31,0	5,0	40,0	1,0		1,60	****
21	TH M3 020 05 014	626113-0200-014	-	2,0	5,0	5,0	14,0	1,0		0,66	****
22	TH M3 020 05 020	626113-0200-020	-	2,0	11,0	5,0	20,0	1,0		0,72	****
23	TH M3 020 05 030	626113-0200-030	-	2,0	21,0	5,0	30,0	1,0		0,83	****
24	TH M3 020 05 040	626113-0201-040	-	2,0	31,0	5,0	40,0	1,5		1,70	****
25	TH M3 025 05 020	626113-0250-020	-	2,5	11,0	5,0	20,0	1,5		1,0	****
26	TH M3 025 05 030	626113-0250-030	-	2,5	21,0	5,0	30,0	1,5		1,5	****
27	TH M3 025 05 040	626113-0250-040	-	2,5	31,0	5,0	40,0	1,5		2,0	****

Peg mounted balls, except for ball-Ø 0,3mm. Special designs on request.

All existing ball materials are available upon request for all styli and all thread sizes.

Reference styli XXT (red dot)

Thread M3
Material Titanium base, carbon fibre stem thermostable, ruby ball

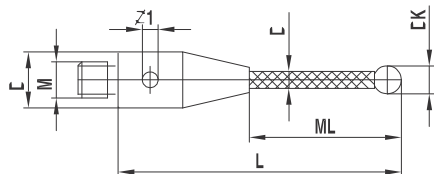


Pos.	itp Order No	analogue Zeiss	Renishaw Order No	DK	ML1 ML	DG D	L	DS1 DS	EAL B	Weight g	* * *
1	TC M3 R50 05 030	626103-0501-030	-	5,0	21,0	5,0	30,0	3,5		1,1	****
2	TC M3 R50 05 050	626103-0501-050	-	5,0	41,0	5,0	50,0	3,5		1,4	****

Thermostable carbon fibre, E-module of approximately 450 GPa.

Carbon fibre styli XXT thermostable

Thread M3
Material Titanium base, carbon fibre stem thermostable, ruby ball



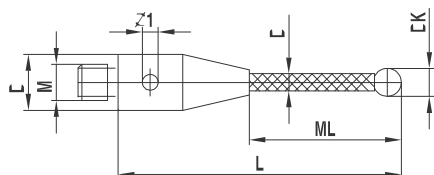
Pos.	itp Order No	analogue Zeiss	Renishaw Order No	DK	ML1 ML	DG D	L	DS1 DS	EAL B	Weight g
1	TC M3 030 05 025	626103-0300-025	-	3,0	16,00	5,0	25,0	2,0		0,65
2	TC M3 030 05 033	626103-0300-033	-	3,0	24,0	5,0	33,0	2,0		0,70
3	TC M3 030 05 040/2,0	626103-0300-040	-	3,0	31,0	5,0	40,0	2,0		0,8
4	TC M3 030 05 042	626103-0300-042	-	3,0	33,0	5,0	42,0	2,0		0,80
5	TC M3 030 05 050	626103-0300-050	-	3,0	41,0	5,0	50,0	2,0		0,80
6	TC M3 030 05 058	626103-0300-058	-	3,0	49,0	5,0	58,0	2,0		1,00
7	TC M3 030 05 059	626103-0300-059	-	3,0	50,0	5,0	59,0	2,0		1,0
8	TC M3 030 05 075	626103-0300-075	-	3,0	66,0	5,0	75,0	2,0		1,0
9	TC M3 040 05 050	626103-0401-050	-	4,0	41,0	5,0	50,0	2,0		1,0
10	TC M3 050 05 030/9	626103-0500-030	-	5,0	21,0	5,0	30,0	3,5		1,1
11	TC M3 050 05 040	626103-0500-040	-	5,0	31,0	5,0	40,0	3,5		1,2
12	TC M3 050 05 050	626103-0500-050	-	5,0	41,0	5,0	50,0	3,5		1,4
13	TC M3 050 05 060	626103-0500-060	-	5,0	51,0	5,0	60,0	3,5		1,5
14	TC M3 050 05 075	626103-0501-075	-	5,0	66,0	5,0	75,0	3,5		1,8
15	TC M3 060 05 050	626103-0600-050	-	6,0	40,0	5,0	50,0	3,5		1,5
16	TC M3 060 05 070	626103-0610-070	-	6,0	61,0	5,0	70,0	3,5		1,8
17	TC M3 060 05 100	626103-0600-100	-	6,0	91,0	5,0	100,0	3,5		2,4
18	TC M3 080 05 030	626103-0800-030	-	8,0	30,0	5,0	30,0	5,0		1,86
19	TC M3 080 05 050	626103-0830-050	-	8,0	50,0	5,0	50,0	5,0		2,1
20	TC M3 080 05 070	626103-0830-070	-	8,0	70,0	5,0	70,0	5,0		2,6
21	TC M3 080 05 100	626103-0830-100	-	8,0	100,00	5,0	100,0	5,0		2,7
22	TC M3 080 05 125	626103-0800-125	-	8,0	125,0	5,0	125,0	5,0		2,9

Peg mounted balls. Thermostable carbon fibre, E-module of approximately 450 GPa. Special designs on request.

All existing ball materials are available upon request for all styli and all thread sizes.

Carbon fibre styli XX1 thermostable with silicon nitride ball

Thread M3
Material Titanium base, carbon fibre stem thermostable, silicon nitride ball, glued ball



Pos.	itp Order No	analogue Zeiss	Renishaw Order No	DK	ML1 ML	DG D	L	DS1 DS	EAL B	Weight g
1	TC M3 S30 05 033/K	626103-0301-033	-	3,0	24,0	5,0	33,0	2,0		0,7
2	TC M3 S30 05 050/K	626103-0301-050	-	3,0	41,0	5,0	50,0	2,0		0,8
3	TC M3 S50 05 050/K	626103-0502-050	-	5,0	41,0	5,0	50,0	3,5		1,4
4	TC M3 S50 05 075/K	626103-0500-075	-	5,0	66,0	5,0	75,0	3,5		1,8
5	TC M3 S80 05 070/K	626103-0801-070	-	8,0	70,0	5,0	70,0	5,0		2,6
6	TC M3 S80 05 125/K	626103-0801-125	-	8,0	125,0	5,0	125,0	5,0		2,9

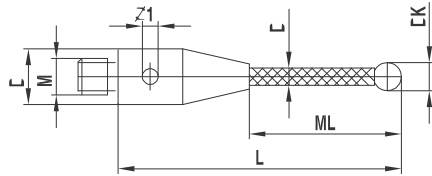
Thermostable carbon fibre, E-module of approximately 450 GPa. Special designs on request.

All existing ball materials are available upon request for all styli and all thread sizes.

Carbon fibre styli XXT, thermostable with silicon nitride ball

Pos.	itp Order No	analogue Zeiss	Renishaw Order No	DK	ML1 ML	DG D	L	DS1 DS	EAL B	Weight g
1	TC M3 S30 05 033	-	-	3,0	24,0	5,0	33,0	2,0		0,7
2	TC M3 S30 05 050	-	-	3,0	41,0	5,0	50,0	2,0		0,8
3	TC M3 S50 05 050	-	-	5,0	41,0	5,0	50,0	3,5		1,4
4	TC M3 S50 05 075	-	-	5,0	66,0	5,0	75,0	3,5		1,8
5	TC M3 S80 05 070	-	-	8,0	70,0	5,0	70,0	5,0		2,6
6	TC M3 S80 05 125	-	-	8,0	125,0	5,0	125,0	5,0		2,9

Thread M3
Material Titanium base, carbon fibre stem thermostable, silicon nitride ball, peg mounted ball for higher stiffness



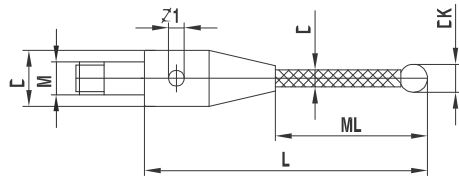
Thermostable carbon fibre, E-module of approximately 450 GPa. Special designs on request.

All existing ball materials are available upon request for all styli and all thread sizes.

Carbon fibre clamping styli XX1, thermostable

Pos.	itp Order No	analogue Zeiss	Renishaw Order No	DK	ML1 ML	DG D	L	DS1 DS	EAL B	Weight g
1	TC M3 030 05 020	626103-0301-020	-	3,0	11,0	5,0	20,0	2,0		0,7
2	TC M3 030 05 030	626103-0301-030	-	3,0	21,0	5,0	30,0	2,0		0,75
3	TC M3 030 05 040	626103-0301-040	-	3,0	31,0	5,0	40,0	2,0		0,8

Thread M3
Material Titanium base, carbon fibre stem thermostable, ruby ball



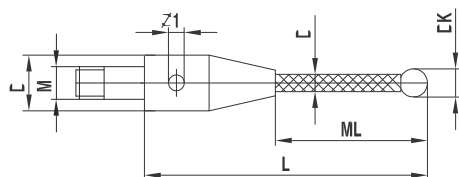
Peg mounted balls. Thermostable carbon fibre, E-module of approximately 450 GPa. Special designs on request.

All existing ball materials are available upon request for all styli and all thread sizes.

Carbon fibre clamping styli XX1, thermostable with silicon nitride ball

Pos.	itp Order No	analogue Zeiss	Renishaw Order No	DK	ML1 ML	DG D	L	DS1 DS	EAL B	Weight g
1	TC M3 S30 05 020/K	626103-0311-020	-	3,0	11,0	5,0	20,0	2,0		0,7
2	TC M3 S30 05 030/K	626103-0311-030	-	3,0	21,0	5,0	30,0	2,0		0,75
3	TC M3 S30 05 040/K	626103-0311-040	-	3,0	31,0	5,0	40,0	2,0		0,8

Thread M3
Material Titanium base, carbon fibre stem, thermostable, silicon nitride ball, glued ball



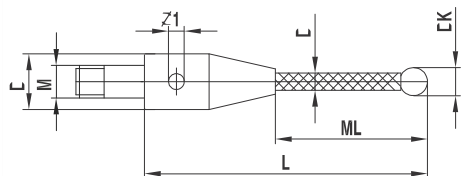
Thermostable carbon fibre, E-module of approximately 450 GPa. Special designs on request.

All existing ball materials are available upon request for all styli and all thread sizes.

Carbon fibre clamping styli XXT, thermostable with silicon nitride ball

Pos.	itp Order No	analogue Zeiss	Renishaw Order No	DK	ML1 ML	DG D	L	DS1 DS	EAL B	Weight g
1	TC M3 S30 05 020	-	-	3,0	11,0	5,0	20,0	2,0		0,7
2	TC M3 S30 05 030	-	-	3,0	21,0	5,0	30,0	2,0		0,75
3	TC M3 S30 05 040	-	-	3,0	31,0	5,0	40,0	2,0		0,8

Thread M3
Material Titanium base, carbon fibre stem thermostable, silicon nitride ball, peg mounted ball for higher stiffness



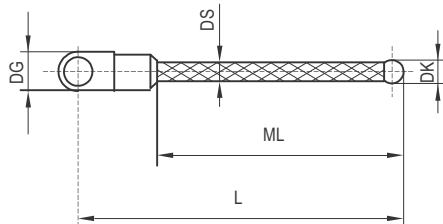
Thermostable carbon fibre, E-module of approximately 450 GPa. Special designs on request.

All existing ball materials are available upon request for all styli and all thread sizes.

1/4 Star styli carbon fiber XXI thermostable

Pos.	itp Order No	analogue Zeiss	Renishaw Order No	DK	ML1 ML	DG D	L	DS1 DS	EAL B	Weight g
1	SC M3 030 05 020	626103-0302-020	-	3,0	11,0	5,0	20,0	2,0		0,8
2	SC M3 030 05 030	626103-0302-030	-	3,0	21,0	5,0	30,0	2,0		0,9
3	SC M3 030 05 040	626103-0302-040	-	3,0	31,0	5,0	40,0	2,0		1,0

Thread M3
Material Titanium base, carbon fibre stem thermostable, ruby ball



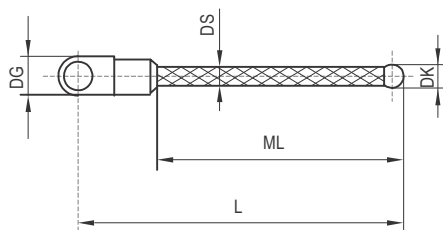
Peg mounted balls. Thermostable carbon fiber, E-module of approximately 450 GPa. Special designs on request.

All existing ball materials are available upon request for all styli and all thread sizes.

**1/4 Star styli carbon fiber XXT
thermostable with silicon nitride ball**

Pos.	itp Order No	analogue Zeiss	Renishaw Order No	DK	ML1 ML	DG D	L	DS1 DS	EAL B	Weight g
1	SC M3 S30 05 020	626103-0312-020	-	3,0	11,0	5,0	20,0	2,0		0,8
2	SC M3 S30 05 030	626103-0312-030	-	3,0	21,0	5,0	30,0	2,0		0,9
3	SC M3 S30 05 040	626103-0312-040	-	3,0	31,0	5,0	40,0	2,0		1,0

Thread M3
Material Titanium base, carbon fibre stem thermostable, silicon nitride ball



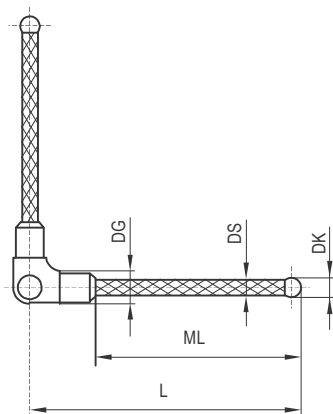
Glued balls. Thermostable carbon fiber, E-module of approximately 450 GPa. Special designs on request.

All existing ball materials are available upon request for all styli and all thread sizes.

**1/2 Star styli carbon fiber XXT
thermostable 90°**

Pos.	itp Order No	analogue Zeiss	Renishaw Order No	DK	ML1 ML	DG D	L	DS1 DS	EAL B	Weight g
1	SC M3 030 05 020/90°	626103-0303-020	-	3,0	11,0	5,0	20,0	2,0		1,4
2	SC M3 030 05 030/90°	626103-0303-030	-	3,0	21,0	5,0	30,0	2,0		1,5
3	SC M3 030 05 040/90°	626103-0303-040	-	3,0	31,0	5,0	40,0	2,0		1,6

Thread M3
Material Titanium base, carbon fibre stem thermostable, ruby ball

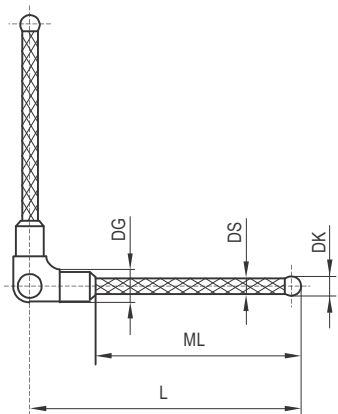


Peg mounted balls. Thermostable carbon fiber, E-module of approximately 450 GPa. Special designs on request.

All existing ball materials are available upon request for all styli and all thread sizes.

**1/2 Star styli carbon fiber XXT
thermostable 90° with silicon nitride
ball**

Thread M3
Material Titanium base, carbon fibre stem
thermostable, silicon nitride ball



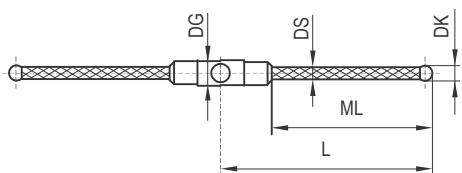
Pos.	itp Order No	analogue Zeiss	Renishaw Order No	DK	ML1 ML	DG D	L	DS1 DS	EAL B	Weight g
1	SC M3 S30 05 020/90°	626103-0313-020	-	3,0	11,0	5,0	20,0	2,0		1,4
2	SC M3 S30 05 030/90°	626103-0313-030	-	3,0	21,0	5,0	30,0	2,0		1,5
3	SC M3 S30 05 040/90°	626103-0313-040	-	3,0	31,0	5,0	40,0	2,0		1,6

Glued balls. Thermostable carbon fiber, E-module of approximately 450 GPa. Special designs on request.

All existing ball materials are available upon request for all styli and all thread sizes.

**1/2 Star styli carbon fiber XXT
thermostable 180°**

Thread M3
Material Titanium base, carbon fibre stem
thermostable, ruby ball



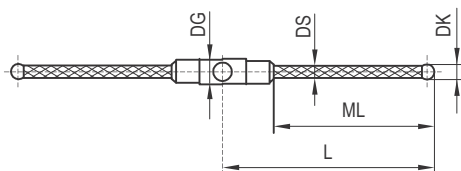
Pos.	itp Order No	analogue Zeiss	Renishaw Order No	DK	ML1 ML	DG D	L	DS1 DS	EAL B	Weight g
1	SC M3 030 05 020/180°	626103-0304-020	-	3,0	11,0	5,0	20,0	2,0		1,4
2	SC M3 030 05 030/180°	626103-0304-030	-	3,0	21,0	5,0	30,0	2,0		1,5
3	SC M3 030 05 040/180°	626103-0304-040	-	3,0	31,0	5,0	40,0	2,0		1,6

Peg mounted balls. Thermostable carbon fiber, E-module of approximately 450 GPa. Special designs on request.

All existing ball materials are available upon request for all styli and all thread sizes.

**1/2 Star styli carbon fiber XXT
thermostable 180° with silicon nitride
ball**

Thread M3
Material Titanium base, carbon fibre stem
thermostable, silicon nitride ball



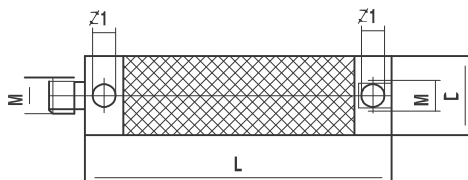
Pos.	itp Order No	analogue Zeiss	Renishaw Order No	DK	ML1 ML	DG D	L	DS1 DS	EAL B	Weight g
1	SC M3 S30 05 020/180°	626103-0314-020	-	3,0	11,0	5,0	20,0	2,0		1,4
2	SC M3 S30 05 030/180°	626103-0314-030	-	3,0	21,0	5,0	30,0	2,0		1,5
3	SC M3 S30 05 040/180°	626103-0314-040	-	3,0	31,0	5,0	40,0	2,0		1,6

Glued balls. Thermostable carbon fiber, E-module of approximately 450 GPa. Special designs on request.

All existing ball materials are available upon request for all styli and all thread sizes.

Extension XXI

Thread M3
Material Black carbon fibre, thermostable,
titanium ends



Pos.	itp Order No	analogue Zeiss	Renishaw Order No	DK	ML1 ML	DG D	L	DS1 DS	EAL B	Weight g
1	VC M3 000 05 020	626103-5020-000	-			5,0	20,0			1,2
2	VC M3 000 05 025	626103-5025-000	-			5,0	25,0			1,25
3	VC M3 000 05 030	626103-5030-000	-			5,0	30,0			1,3
4	VC M3 000 05 040	626103-5040-000	-			5,0	40,0			1,4
5	VC M3 000 05 050	626103-5050-000	-			5,0	50,0			1,5
6	VC M3 000 05 060	626103-5060-000	-			5,0	60,0			1,7
7	VC M3 000 05 075	626103-5075-000	-			5,0	75,0			1,7
8	VC M3 000 05 080	626103-5080-000	-			5,0	80,0			1,8
9	VC M3 000 05 100	626103-5100-000	-			5,0	100,0			2,0
10	VC M3 000 05 130	626103-5130-000	-			5,0	130,0			2,5
11	VC M3 000 05 150	626103-5150-000	-			5,0	150,0			2,7

Special designs on request.

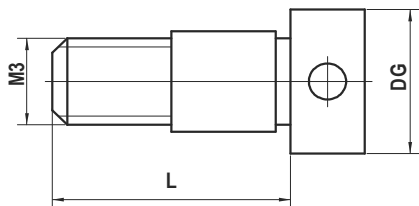
Thermostable carbon fibre made of high tech fibres used in aerospace technology. E-module of approximately 450 GPa.

Clamping screw XXT

Pos.	itp Order No	analogue Zeiss	Renishaw Order No	DK	ML1 ML	DG D	L	DS1 DS	EAL B	Weight g
1	SI M3 000 05 008	626103-6110-004	-			5,0	8,0			0,5

Thread M3
Material Titanium

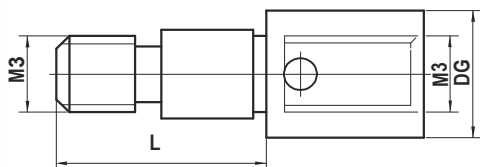
Special designs on request.


Clamping screw XX1, with internal thread M3

Pos.	itp Order No	analogue Zeiss	Renishaw Order No	DK	ML1 ML	DG D	L	DS1 DS	EAL B	Weight g
1	SI M3 M30 05 008	626103-6110-005	-			5,0	8,0			0,7

Thread M3
Material Titanium

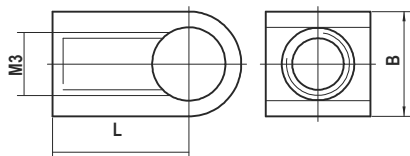
Special designs on request.


Cube XX1 90°, 1 way

Pos.	itp Order No	analogue Zeiss	Renishaw Order No	DK	ML1 ML	DG D	L	DS1 DS	EAL B	Weight g
1	WT M3 000 05 006	626103-6110-001	-				6,5		5,0	0,64

Thread M3
Material Titanium

Special designs on request.

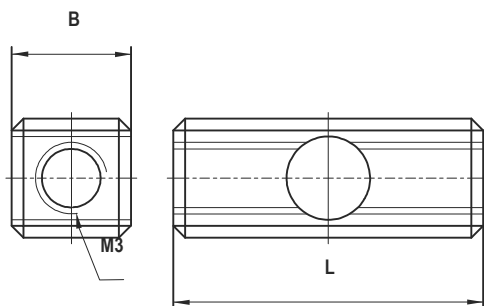


Cube XXT 180°, 2 ways

Pos.	itp Order No	analogue Zeiss	Renishaw Order No	DK	ML1 ML	DG D	L	DS1 DS	EAL B	Weight g	
1	WT M3 180 05 013	626103-6110-002	-				13,0		5,0	1,05	*****

Material Titanium

Special designs on request.

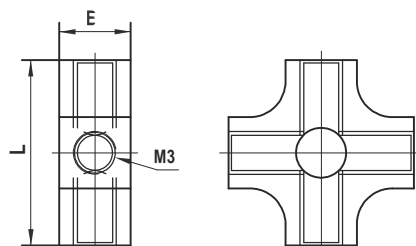

Cube star XXT

Pos.	itp Order No	analogue Zeiss	Renishaw Order No	DK	ML1 ML	DG D	L	DS1 DS	EAL B	Weight g	
1	WT M3 000 05 013	626103-6110-003	-				13,0		5,0	1,8	

Thread M3

Material Titanium

Special designs on request.

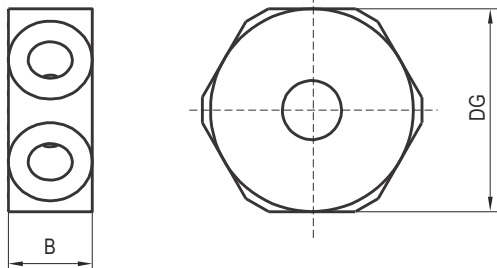


Cube XXT, 6-star

Pos.	itp Order No	analogue Zeiss	Renishaw Order No	DK	ML1 ML	DG D	L	DS1 DS	EAL B	Weight g	*
1	WT M3 000 12 005	626103-6110-006	-			12,0			5,0		*****

Thread M3
Material Titanium

Special designs on request.

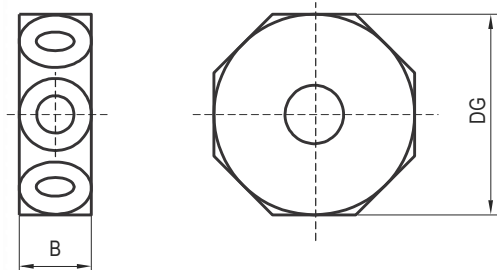


Cube XXT, 8-star

Pos.	itp Order No	analogue Zeiss	Renishaw Order No	DK	ML1 ML	DG D	L	DS1 DS	EAL B	Weight g	*****
1	WT M3 000 14 005	626103-6110-007	-			14,0			5,0		*****

Thread M3
Material Titanium

Special designs on request.

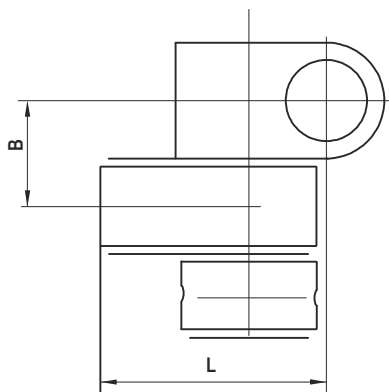


Knuckle XXT

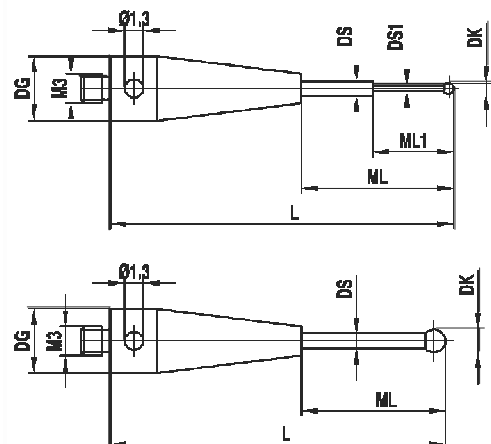
Pos.	itp Order No	analogue Zeiss	Renishaw Order No	DK	ML1 ML	DG D	L	DS1 DS	EAL B	Weight g
1	DT M3 000 05 010	626103-6180-001	-				10,0		5,0	1,65

Thread M3
Material Titanium

Special designs on request.



Carbide styli		Pos.	itp Order No	analogue Zeiss	Renishaw Order No	DK	ML1 ML	DG D	L	DS1 DS	EAL B	Weight g	* * *
Thread	M3	1	TH M3 002 04 022	-	-	0,2	2,3/9,0	4,0	22,0	0,18/1,0		1,0	*****
Material	Stainless steel base, carbide stem, ruby ball	2	TH M3 0025 04 022	-	-	0,25	2,3/9,0	4,0	22,0	0,18/1,0		1,0	*****
		3	TH M3 003 04 022	602030-8121-000	A-5555-0273	0,3	2,3/9,0	4,0	22,0	0,2/1,0		1,0	*****
		4	TH M3 005 04 022	602030-8115-000	A-5555-0267	0,5	2,5/9,0	4,0	22,0	0,3/1,0		1,0	*****
		5	TH M3 006 04 022	602030-8116-000	A-5555-0268	0,6	4,6/9,0	4,0	22,0	0,4/1,0		1,0	*****
		6	TH M3 008 04 022	602030-8117-000	A-5555-0269	0,8	4,8/9,0	4,0	22,0	0,6/1,0		1,0	*****
		7	TH M3 010 04 010	602030-8120-000	A-5555-0272	1,0	5,0/5,5	4,0	10,5	0,8/1,0		1,0	*****
		8	TH M3 010 04 022	602030-8118-000	A-5555-0270	1,0	5,0/9,0	4,0	22,0	0,8/1,0		1,0	*****
		9	TH M3 015 04 022	602030-8119-000	A-5555-0271	1,5	9,0	4,0	22,0	1,0		1,0	*****
		10	TH M3 020 04 021	602030-8023-000	A-5555-0274	2,0	15,0	4,0	21,0	1,0		1,0	*****
		11	TH M3 020 04 022	602030-8104-000	A-5555-0261	2,0	9,0	4,0	22,0	1,0		1,0	*****
		12	TH M3 020 04 040	-	-	2,0	34,0	4,0	40,0	1,5		2,0	*****
		13	TH M3 030 04 021	602030-8106-000	A-5555-0277	3,0	13,0	4,0	21,0	2,0		1,0	*****
		14	TH M3 030 04 022	602030-8021-000	A-5555-0276	3,0	15,5	4,0	21,5	1,5		1,0	*****
		15	TH M3 Z30 05 040	602030-8113-000	A-5555-0263	3,0	21,5	5,5	40,0	2,0		4,0	*****
		16	TH M3 030 05 050	-	-	3,0	31,5	5,5	50,0	2,0		4,5	*****
		17	TH M3 040 04 030	-	-	4,0	22,0	4,0	30,0	2,0		2,0	*****
		18	TH M3 040 04 040	-	-	4,0	32,0	4,0	40,0	2,0		2,0	*****
		19	TH M3 040 04 050	-	-	4,0	42,0	4,0	50,0	2,0		2,9	*****
		20	TH M3 050 04 030	-	-	5,0	22,0	4,0	30,0	2,0		2,1	*****
		21	TH M3 050 04 040	-	-	5,0	32,0	4,0	40,0	2,0		2,0	*****
		22	TH M3 050 04 050	-	-	5,0	42,0	4,0	50,0	2,0		3,0	*****
		23	TH M3 050 04 060	-	-	5,0	52,0	4,0	60,0	2,0		3,5	*****
		24	TH M3 060 04 030	-	-	6,0	22,0	4,0	30,0	2,0		2,3	*****
		25	TH M3 060 04 040	-	-	6,0	32,0	4,0	40,0	2,0		2,7	*****
		26	TH M3 060 04 050	-	-	6,0	42,0	4,0	50,0	2,0		3,2	*****



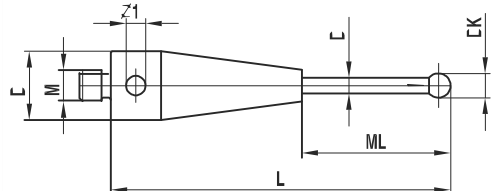
Peg mounted balls, except for ball-Ø 0,2mm - 0,3mm. Special designs on request.

All existing ball materials are available upon request for all styli and all thread sizes.

Ceramic styli

Pos.	itp Order No	analogue Zeiss	Renishaw Order No	DK	ML1 ML	DG D	L	DS1 DS	EAL B	Weight g
1	TK M3 040 04 032	602030-8102-000	A-5555-0264	4,0	26,0	4,0	32,0	2,0		1,0
2	TK M3 050 04 032	602030-8101-000	A-5555-0266	5,0	19,0	4,0	32,0	2,0		1,0
3	TK M3 060 04 013	602030-8020-000	A-5555-0275	6,0	9,0	4,0	13,0	2,0		1,0
4	TK M3 060 04 043	-	-	6,0	30,5	4,0	43,5	2,0		1,2
5	TK M3 060 04 063	-	-	6,0	50,5	4,0	63,5	2,0		1,5
6	TK M3 080 04 031	-	-	8,0	18,5	4,0	31,5	2,0		1,3

Thread M3
Material Stainless steel base, ceramic stem, ruby ball



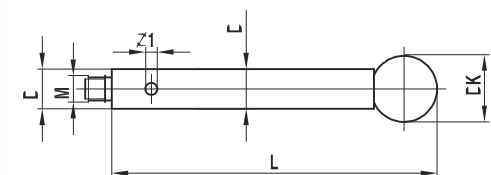
Peg mounted balls. Special designs on request.

All existing ball materials are available upon request for all styli and all thread sizes.

Steel styli

Pos.	itp Order No	analogue Zeiss	Renishaw Order No	DK	ML1 ML	DG D	L	DS1 DS	EAL B	Weight g
1	TI M3 050 04 023	-	-	5,0	23,5	4,0	23,5	4,0		2,2
2	TI M3 050 04 033	-	-	5,0	33,5	4,0	33,5	4,0		3,1
3	TI M3 050 04 042	-	-	5,0	42,5	4,0	42,5	4,0		4,1
4	TI M3 050 04 052	-	-	5,0	52,5	4,0	52,5	4,0		5,1
5	TI M3 060 04 024	-	-	6,0	24,0	4,0	24,0	4,0		2,3
6	TI M3 060 04 034	-	-	6,0	34,0	4,0	34,0	4,0		3,2
7	TI M3 060 04 043	-	-	6,0	43,0	4,0	43,0	4,0		4,3
8	TI M3 060 04 053	-	-	6,0	53,0	4,0	53,0	4,0		5,2

Thread M3
Material Stainless steel base and stem, ruby ball



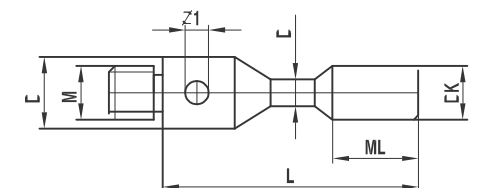
Peg mounted balls. Special designs on request.

All existing ball materials are available upon request for all styli and all thread sizes.

Cylinder styli

Pos.	itp Order No	analogue Zeiss	Renishaw Order No	DK	ML1 ML	DG D	L	DS1 DS	EAL B	Weight g
1	ZH M3 015 04 011	602030-8097-000	-	1,5	1,5	4,0	11,0	1,0		0,4
2	ZH M3 030 04 013	602030-8099-000	-	3,0	4,0	4,0	13,0	1,5		0,7

Thread M3
Material Stainless steel base, carbide stem and cylinder



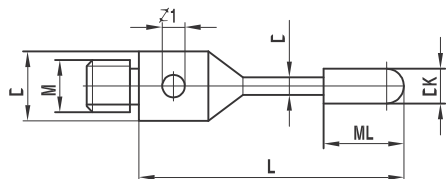
Special designs on request.

Cylinder styli

Pos.	itp Order No	analogue Zeiss	Renishaw Order No	DK	ML1 ML	DG D	L	DS1 DS	EAL B	Weight g
1	ZR M3 020 04 020	602030-8107-000	-	2,0	7,0	4,0	20,0	1,5		0,7

Thread M3
Material Stainless steel base, carbide stem, ruby cylinder

Special designs on request.

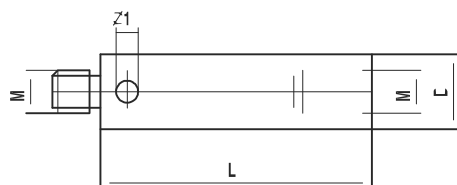


Extension

Pos.	itp Order No	analogue Zeiss	Renishaw Order No	DK	ML1 ML	DG D	L	DS1 DS	EAL B	Weight g
1	VI M3 000 04 010	602030-8301-000	M-5000-7633			4,0	10,0			0,7
2	VI M3 000 04 020	602030-8302-000	M-5000-3592			4,0	20,0			1,6
3	VI M3 000 04 030	602030-8303-000	A-5555-0286			4,0	30,0			2,6
4	VI M3 000 04 040	602030-8304-000	A-5555-0287			4,0	40,0			3,7
5	VI M3 000 04 050	602030-8305-000	A-5555-0288			4,0	50,0			4,7

Thread M3
Material Stainless steel

Special designs on request.

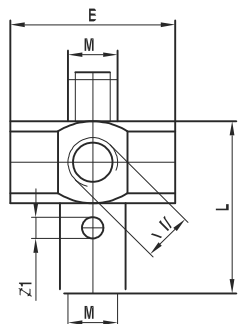


5-way holder, rotary

Pos.	itp Order No	analogue Zeiss	Renishaw Order No	DK	ML1 ML	DG D	L	DS1 DS	EAL B	Weight g
1	HI M3 000 12 011	602030-8382-000	A-5555-0303				11,5		12,0	4,2

Thread M3
Material Stainless steel

Special designs on request.

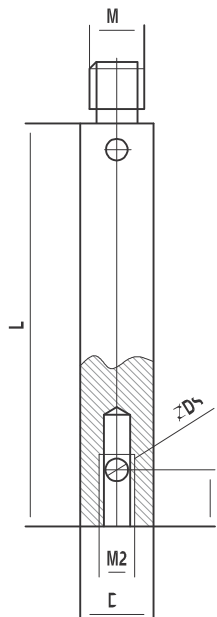


Holder 90° for styli

Pos.	itp Order No	analogue Zeiss	Renishaw Order No	DK	ML1 ML	DG D	L	DS1 DS	EAL B	Weight g
1	KH M3 010 04 030	-	-			4,0	30,0	1,0		2,9
2	KH M3 015 04 030	-	-			4,0	30,0	1,5		2,9

Thread M3
Material Stainless steel

Special designs on request.

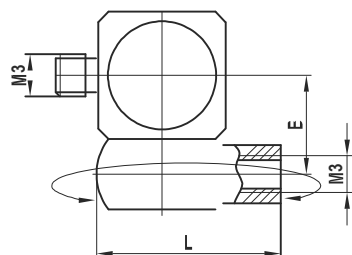


Rotary knuckle

Pos.	itp Order No	analogue Zeiss	Renishaw Order No	DK	ML1 ML	DG D	L	DS1 DS	EAL B	Weight g
1	DI M3 000 06 012	602030-9102-000	A-5000-7616				12,0		6,0	3,6

Thread M3
Material Stainless steel

Special designs on request.

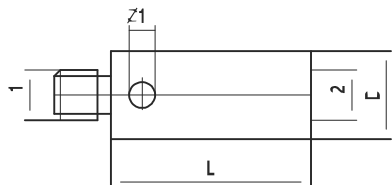


Adapter

Pos.	itp Order No	analogue Zeiss	Renishaw Order No	DK	ML1 ML	DG D	L	DS1 DS	from to	Weight g
1	RI M3 000 04 005	602030-8341-000	M-5000-4163			4,0	5,0		M3 / M2	0,5
2	RI M2 000 04 005	602030-8345-000	A-5555-0306			4,0	5,0		M2 / M3	0,5
3	RI M2 000 04 007	000000-1049-178	-			4,0	7,0		M2 / M3	0,5

Thread M3/M2
Material Stainless steel

Special designs on request.

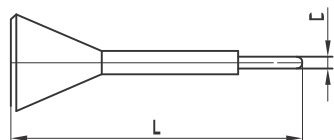


Pin tool

Pos.	itp Order No	analogue Zeiss	Renishaw Order No	DK	ML1 ML	DG D	L	DS1 DS	EAL B	Weight g
1	MI MO 012 00 023	602030-0001-000	A-5555-0233			1,2	23,0			

Thread M2/M3
Material Stainless steel

Special designs on request.



Wrench

Pos.	itp Order No	analogue Zeiss	Renishaw Order No	DK	ML1 ML	DG D	L	DS1 DS	EAL B	Weight g
1	TF M2 M30 08 195	000000-1018-201	A-5555-0307							

Thread M3
Material Stainless steel

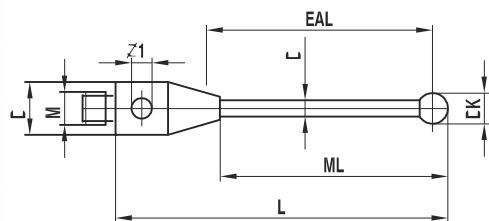
Special designs on request.



Carbide styli

Pos.	itp Order No	analogue Renishaw	Short Desig.	DK	ML1 ML	DG D	L	DS1 DS	EAL B	Weight g
1	TH M3 005 04 021	A-5000-7632	PS1-8R	0,5	2,5	4,0	21,25	0,4	2,0	1,0
2	TH M3 015 R4 022	A-5003-0050	PS1-17R	1,5	14,25	4,0	21,75	1,0	12,5	0,8
3	TH M3 015 04 031	A-5003-0051	PS1-19R	1,5	23,25	4,0	30,75	1,0	22,5	1,0
4	TH M3 020 04 031	A-5003-0052	PS1-20R	2,0	23,5	4,0	31,0	1,5	22,5	1,3
5	TH M3 020 04 041	A-5003-0053	PS1-23R	2,0	33,5	4,0	41,0	1,5	32,5	1,6
6	TH M3 025 04 022	A-5003-0054	PS1-18R	2,5	14,75	4,0	22,25	2,0	12,5	1,3
7	TH M3 025 04 031	A-5003-0055	PS1-21R	2,5	23,75	4,0	31,25	2,0	22,5	1,8
8	TH M3 025 04 041	A-5003-0056	PS1-24R	2,5	33,75	4,0	41,25	2,0	32,5	2,3
9	TH M3 030 04 031	A-5003-0057	PS1-22R	3,0	24,0	4,0	31,5	2,0	22,5	1,9
10	TH M3 030 04 041	A-5003-0058	PS1-25R	3,0	34,0	4,0	41,5	2,0	32,5	2,3
11	TH M3 030 04 051	A-5003-0059	PS1-28R	3,0	44,0	4,0	51,5	2,0	42,5	2,8
12	TH M3 040 04 042	A-5003-0060	PS1-26R	4,0	34,5	4,0	42,0	2,0	36,0	2,4
13	TH M3 040 04 052	A-5003-0061	PS1-29R	4,0	44,5	4,0	52,0	2,0	46,0	2,9
14	TH M3 050 04 042	A-5003-0062	PS1-27R	5,0	35,0	4,0	42,5	2,5	40,0	3,5
15	TH M3 050 04 052	A-5003-0063	PS1-30R	5,0	45,0	4,0	52,5	2,5	50,0	4,1

Thread M3
Material Stainless steel base, carbide stem, ruby ball



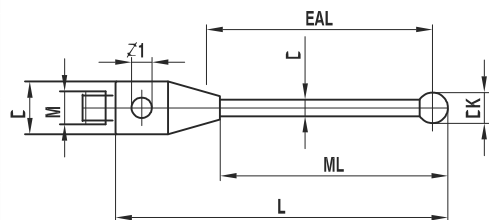
Peg mounted balls. Special designs on request.

All existing ball materials are available upon request for all styli and all thread sizes.

Carbide styli with silicon nitride ball

Pos.	itp Order No	analogue Renishaw	Short Desig.	DK	ML1 ML	DG D	L	DS1 DS	EAL B	Weight g
1	TH M3 S15 R4 022	-	-	1,5	14,25	4,0	21,75	1,0	12,5	0,8
2	TH M3 S15 04 031	-	-	1,5	23,25	4,0	30,75	1,0	22,5	1,0
3	TH M3 S20 04 031	A-5003-5724	-	2,0	23,5	4,0	31,0	1,5	22,5	1,3
4	TH M3 S20 04 041	-	-	2,0	33,5	4,0	41,0	1,5	32,5	1,6
5	TH M3 S25 04 022	-	-	2,5	14,75	4,0	22,25	2,0	12,5	1,3
6	TH M3 S25 04 031	-	-	2,5	23,75	4,0	31,25	2,0	22,5	1,8
7	TH M3 S25 04 041	-	-	2,5	33,75	4,0	41,25	2,0	32,5	2,3
8	TH M3 S30 04 031	-	-	3,0	24,0	4,0	31,5	2,0	22,5	1,9
9	TH M3 S30 04 041	-	-	3,0	34,0	4,0	41,5	2,0	32,5	2,3
10	TH M3 S30 04 051	-	-	3,0	44,0	4,0	51,5	2,0	42,5	2,8
11	TH M3 S40 04 042	-	-	4,0	34,5	4,0	42,0	2,0	40,0	2,4
12	TH M3 S40 04 052	-	-	4,0	44,5	4,0	52,0	2,0	50,0	2,9
13	TH M3 S50 04 042	-	-	5,0	35,0	4,0	42,5	2,5	40,0	3,5
14	TH M3 S50 04 052	-	-	5,0	45,0	4,0	52,5	2,5	50,0	4,1

Thread M3
Material Stainless steel base, carbide stem, silicon nitride ball



Peg mounted balls. Special designs on request.

All existing ball materials are available upon request for all styli and all thread sizes.

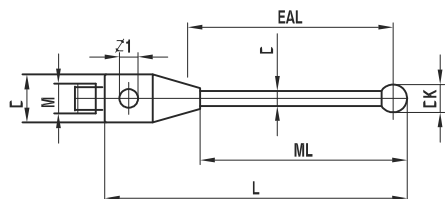
Carbide styli with zirconium oxide ball

Pos.	itp Order No	analogue Renishaw	Short Desig.	DK	ML1 ML	DG D	L	DS1 DS	EAL B	Weight g
1	TH M3 Z20 04 031	A-5003-5738	-	2,0	23,5	4,0	31,0	1,5	22,5	1,4

Thread M3
Material Stainless steel base, carbide stem, zirconium oxide ball

Peg mounted balls. Special designs on request.

All existing ball materials are available upon request for all styli and all thread sizes.



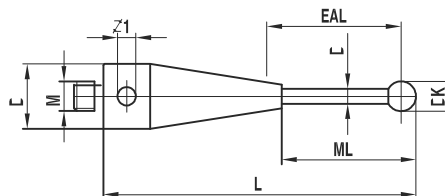
Ceramic styli

Pos.	itp Order No	analogue Renishaw	Short Desig.	DK	ML1 ML	DG D	L	DS1 DS	EAL B	Weight g
1	TK M3 030 04 051	A-5003-0067	PS1-31R	3,0	44,0	4,0	51,5	2,0	42,5	1,2
2	TK M3 040 04 052	A-5003-0068	PS1-32R	4,0	44,5	4,0	52,0	2,0	46,0	1,3
3	TK M3 050 04 052	A-5003-0069	PS1-33R	5,0	45,0	4,0	52,5	2,5	50,0	1,4

Thread M3
Material Stainless steel base, ceramic stem, ruby ball

Peg mounted balls. Special designs on request.

All existing ball materials are available upon request for all styli and all thread sizes.



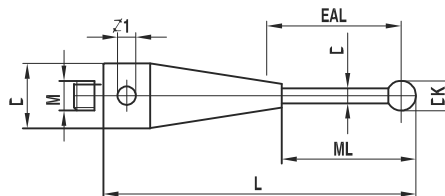
Ceramic styli with silicon nitride ball

Pos.	itp Order No	analogue Renishaw	Short Desig.	DK	ML1 ML	DG D	L	DS1 DS	EAL B	Weight g
1	TK M3 S30 04 051	-	-	3,0	44,0	4,0	51,5	2,0	42,5	1,2
2	TK M3 S40 04 052	A-5003-5725	-	4,0	44,5	4,0	52,0	2,0	46,0	1,3
3	TK M3 S50 04 052	-	-	5,0	45,0	4,0	52,5	2,5	50,0	1,4

Thread M3
Material Stainless steel base, ceramic stem, silicon nitride ball

Peg mounted balls. Special designs on request.

All existing ball materials are available upon request for all styli and all thread sizes.



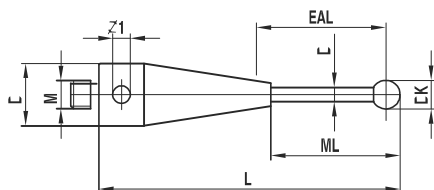
Ceramic styli with zirconium oxide ball

Pos.	itp Order No	analogue Renishaw	Short Desig.	DK	ML1 ML	DG D	L	DS1 DS	EAL B	Weight g
1	TK M3 Z40 04 052	A-5003-5739	-	4,0	44,5	4,0	52,0	2,0	50,0	1,5

Thread M3
Material Stainless steel base, ceramic stem, zirconium oxide ball

Peg mounted balls. Special designs on request.

All existing ball materials are available upon request for all styli and all thread sizes.

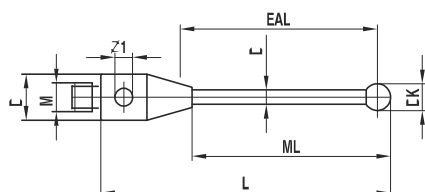

Steel styli

Pos.	itp Order No	analogue Renishaw	Short Desig.	DK	ML1 ML	DG D	L	DS1 DS	EAL B	Weight g
1	TI M3 010 04 021	A-5000-3551	PS1-9R	1,0	4,5	4,0	21,5	0,7	4,0	1,0
2	TI M3 020 04 022	A-5000-3552	PS1-10R	2,0	9,0	4,0	22,0	1,5	8,0	1,0
3	TI M3 030 04 022	A-5000-3553	PS1-11R	3,0	13,5	4,0	22,5	1,5	12,0	1,0
4	TI M3 040 04 023	A-5000-7606	PS1-12R	4,0	13,0	4,0	23,0	2,5	17,2	1,3
5	TI M3 040 04 033	A-5000-3554	PS1-1R	4,0	23,0	4,0	33,0	2,5	27,0	2,5
6	TI M3 050 R4 023	A-5000-7630	PS1-13R	5,0	13,5	4,0	23,5	2,5	21,0	1,5
7	TI M3 050 R4 033	A-5000-7648	PS1-14R	5,0	33,5	4,0	33,5	3,5	31,0	3,0

Thread M3
Material Stainless steel base and stem, ruby ball

Peg mounted balls. Special designs on request.

All existing ball materials are available upon request for all styli and all thread sizes.

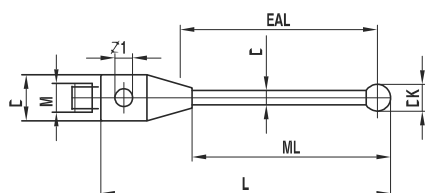

Stainless steel styli with silicon nitride ball

Pos.	itp Order No	analogue Renishaw	Short Desig.	DK	ML1 ML	DG D	L	DS1 DS	EAL B	Weight g
1	TI M3 S10 04 021	-	-	1,0	4,5	4,0	21,5	0,7	4,0	1,0
2	TI M3 S20 04 022	A-5003-5723	-	2,0	9,0	4,0	22,0	1,5	8,0	1,0
3	TI M3 S30 04 022	-	-	3,0	13,5	4,0	22,5	1,5	12,0	1,0
4	TI M3 S40 04 023	A-5003-5061	-	4,0	13,0	4,0	23,0	2,5	17,2	1,3
5	TI M3 S40 04 033	-	-	4,0	23,0	4,0	33,0	2,5	27,0	2,5
6	TI M3 S50 R4 023	-	-	5,0	13,5	4,0	23,5	2,5	21,0	1,5
7	TI M3 S50 R4 033	-	-	5,0	33,5	4,0	33,5	3,5	31,0	3,0

Thread M3
Material Stainless steel base and stem, silicon nitride ball

Peg mounted balls. Special designs on request.

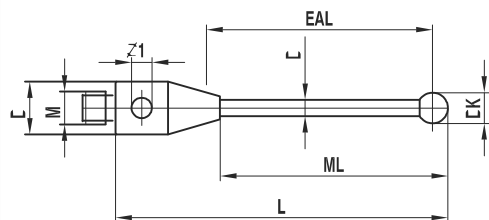
All existing ball materials are available upon request for all styli and all thread sizes.



Steel styli with zirconium oxide ball

Pos.	itp Order No	analogue Renishaw	Short Desig.	DK	ML1 ML	DG D	L	DS1 DS	EAL B	Weight g
1	TI M3 Z20 04 022	A-5003-5736	-	2,0	9,0	4,0	22,0	1,5	8,0	1,0
2	TI M3 Z40 04 023	A-5003-5737	-	4,0	13,0	4,0	23,0	2,5	17,2	1,6

Thread M3
Material Stainless steel base and stem, zirconium oxide ball



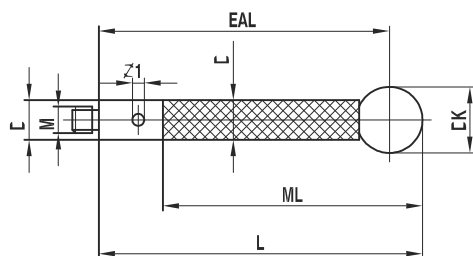
Peg mounted balls. Special designs on request.

All existing ball materials are available upon request for all styli and all thread sizes.

Carbon fibre styli thermostable

Pos.	itp Order No	analogue Renishaw	Short Desig.	DK	ML1 ML	DG D	L	DS1 DS	EAL B	Weight g
1	TC M3 060 04 078	A-5003-4860	-	6,0	68,0	4,0	78,0	4,0	75,0	2,4
2	TC M3 060 04 103	A-5003-4861	-	6,0	93,0	4,0	103,0	4,0	100,0	2,9
3	TC M3 080 04 079	A-5003-4862	-	8,0	69,0	4,0	79,0	4,0	75,0	3,0
4	TC M3 080 04 104	A-5003-4863	-	8,0	94,0	4,0	104,0	4,0	100,0	3,5
5	TC M3 100 04 080	A-5003-7057	-	10,0	70,0	4,0	80,0	4,0	75,0	4,1
6	TC M3 100 04 105	A-5003-7056	-	10,0	95,0	4,0	105,0	4,0	100,0	4,6
7	TC M3 100 04 155	A-5003-7055	-	10,0	143,5	4,0	155,0	4,0	150,0	5,5
8	TC M3 100 04 205	A-5003-7054	-	10,0	193,5	4,0	205,0	4,0	200,0	6,5
9	TC M3 120 04 106	A-5003-7445	-	12,0	96,0	4,0	106,0	4,0	100,0	5,9
10	TC M3 120 04 156	A-5003-7446	-	12,0	144,5	4,0	156,0	4,0	150,0	6,9
11	TC M3 120 04 206	A-5003-7447	-	12,0	194,5	4,0	206,0	4,0	200,0	7,9

Thread M3
Material Stainless steel base, carbon fibre stem thermostable, ruby ball



Peg mounted balls. Thermostable carbon fibre, E-module of approximately 450 GPa.

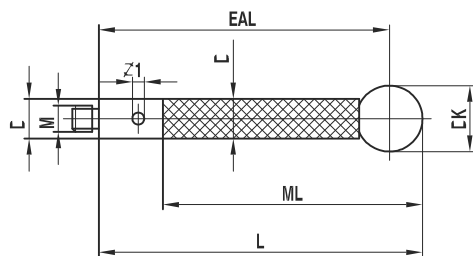
All existing ball materials are available upon request for all styli and all thread sizes.

Carbon fibre styli thermostable with silicon nitride ball

Pos.	itp Order No	analogue Renishaw	Short Desig.	DK	ML1 ML	DG D	L	DS1 DS	EAL B	Weight g
1	TC M3 S60 04 078	A-5003-5726	-	6,0	68,0	4,0	78,0	4,0	75,0	2,4
2	TC M3 S60 04 103	A-5003-5727	-	6,0	93,0	4,0	103,0	4,0	100,0	2,9
3	TC M3 S80 04 079	-	-	8,0	69,0	4,0	79,0	4,0	75,0	3,0
4	TC M3 S80 04 104	-	-	8,0	94,0	4,0	104,0	4,0	100,0	3,5

Peg mounted balls. Thermostable carbon fibre, E-module of approximately 450 GPa. Special designs on request.

All existing ball materials are available upon request for all styli and all thread sizes.

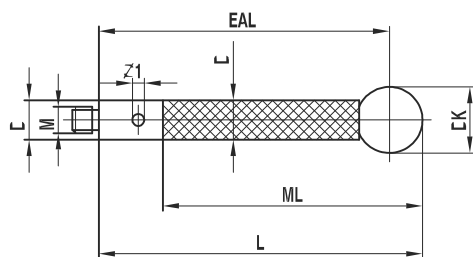


Carbon fibre styli thermostable with zirconium oxide ball

Pos.	itp Order No	analogue Renishaw	Short Desig.	DK	ML1 ML	DG D	L	DS1 DS	EAL B	Weight g
1	TC M3 Z60 04 078	A-5003-5740	-	6,0	68,0	4,0	78,0	4,0	75,0	3,4
2	TC M3 Z60 04 103	A-5003-5741	-	6,0	93,0	4,0	103,0	4,0	100,0	3,9
3	TC M3 Z80 04 079	-	-	8,0	69,0	4,0	79,0	4,0	75,0	3,5
4	TC M3 Z80 04 104	-	-	8,0	94,0	4,0	104,0	4,0	100,0	4,0

Peg mounted balls. Thermostable carbon fibre, E-module of approximately 450 GPa. Special designs on request.

All existing ball materials are available upon request for all styli and all thread sizes.



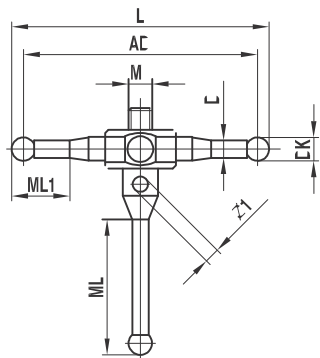
Star styli

Pos.	itp Order No	analogue Renishaw	Short Desig.	DK	ML1 ML	DG D	L	DS1 DS	AD	Weight g
1	SI M3 020 07 032	A-5003-0076	PS1-34R	2,0	9,5 / 12,5	7,0	32,0	1,4	30,0	3,0
2	SI M3 020 07 052	A-5003-0077	PS1-35R	2,0	12,0 / 12,0	7,0	52,0	1,4	50,0	5,3

Thread M3
Material Stainless steel cube base and stems, ruby balls

Peg mounted balls. Special designs on request.

All existing ball materials are available upon request for all styli and all thread sizes.

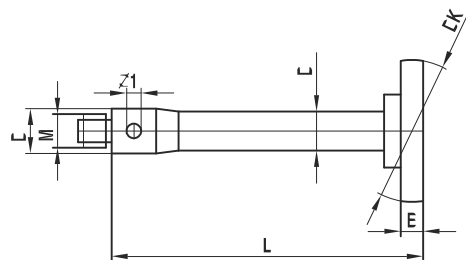


Spherical disk styli

Pos.	itp Order No	analogue Renishaw	Short Desig.	DK	ML1 ML	DG D	L	DS1 DS	EAL B	Weight g
1	KI M3 127 04 032	A-5000-3615	PS1-3R	12,7		4,0	32,0	3,5	2,3	4,0

Thread M3
Material Stainless steel base and stem, high-strength steel disk

Special designs on request.

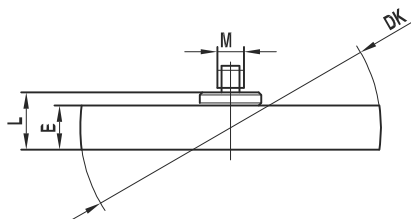


Spherical disk styli

Pos.	itp Order No	analogue Renishaw	Short Desig.	DK	ML1 ML	DG D	L	DS1 DS	EAL B	Weight g
1	KI M3 050 35 M30	A-5000-7612	PS1-5R	35,0			7,0		5,0	10,0
2	KI M3 060 63 M30	A-5000-7669	PS1-15R	63,5			7,5		6,0	45,0

Thread M3
Material Stainless steel base, high-strength steel disk

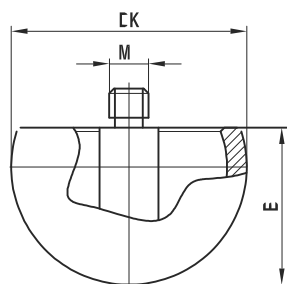
Special designs on request.


Hollow ceramic hemisphere

Pos.	itp Order No	analogue Renishaw	Short Desig.	DK	ML1 ML	DG D	L	DS1 DS	EAL B	Weight g
1	HK M3 180 04 012	-	-	18,0					12,0	3,3
2	HK M3 300 04 018	A-5000-7814	PS1-16R	30,0					18,0	18,0

Thread M3
Material Stainless steel base, hollow ceramic hemisphere

Special designs on request.

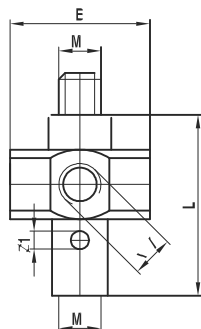


5-way holder, rotary

Pos.	itp Order No	analogue Renishaw	Short Desig.	DK	ML1 ML	DG D	L	DS1 DS	EAL B	Weight g
1	HI M3 000 10 013	A-5000-7610	SC4				13,0		10,0	3,6

Thread M3
Material Stainless steel

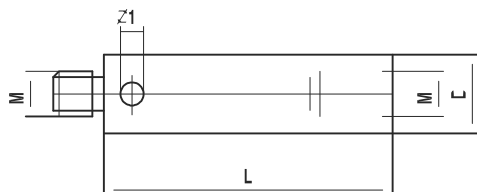
Special designs on request.


Extension

Pos.	itp Order No	analogue Renishaw	Short Desig.	DK	ML1 ML	DG D	L	DS1 DS	EAL B	Weight g
1	VI M3 000 04 010	M-5000-7633	SE8			4,0	10,0			0,9
2	VI M3 000 04 020	M-5000-3592	SE2			4,0	20,0			1,6
3	VI M3 000 04 035	M-5000-3593	SE3			4,0	35,0			2,9

Thread M3
Material Stainless steel

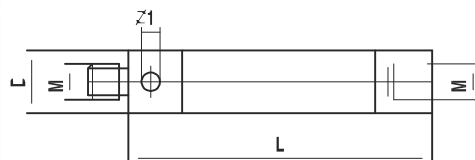
Special designs on request.


Extension

Pos.	itp Order No	analogue Renishaw	Short Desig.	DK	ML1 ML	DG D	L	DS1 DS	EAL B	Weight g
1	VK M3 000 04 030	-	-			4,0	30,0			2,0
2	VK M3 000 04 040	-	-			4,0	40,0			2,5
3	VK M3 000 04 050	A-5003-0075	SE29			4,0	50,0			3,0
4	VK M3 000 04 060	-	-			4,0	60,0			3,5

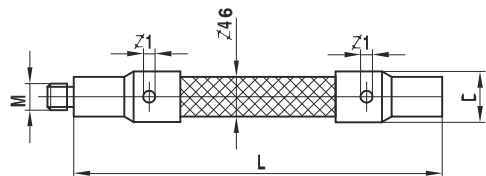
Thread M3
Material Ceramic, stainless steel ends

Special designs on request.



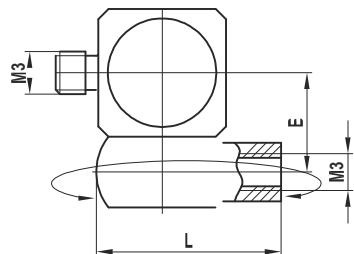
Extension		Pos.	itp Order No	analogue Renishaw	Short Desig.	DK	ML1 ML	DG D	L	DS1 DS	EAL B	Weight g
Thread	M3	1	VC M3 000 04 075	A-5003-4864	-			4,6	75,0			2,5
Material	Black carbon fibre, stainless steel ends	2	VC M3 000 04 100	A-5003-4865	-			4,6	100,0			3,0

Special designs on request.



Rotary adapter		Pos.	itp Order No	analogue Renishaw	Short Desig.	DK	ML1 ML	DG D	L	DS1 DS	EAL B	Weight g
Thread	M3	1	DI M3 000 06 012	A-5000-7616	SK3				12,0		6,0	3,6
Material	Stainless steel											

Special designs on request.



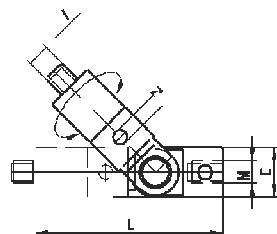
Rotary knuckle, slewing range 360°, swing range 180°

Pos.	itp Order No	analogue Renishaw	Short Desig.	DK	ML1 ML	DG D	L	DS1 DS	EAL B	Weight g
1	GI M3 000 04 017	A-5003-4686	-			4,0	17,0			1,5

Thread M3

Material Stainless steel

Special designs on request.

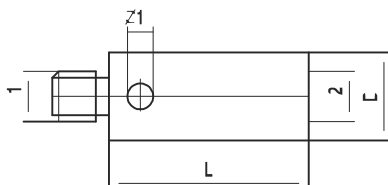

Adapter

Pos.	itp Order No	analogue Renishaw	Short Desig.	DK	ML1 ML	DG D	L	DS1 DS	G1G2	Weight g
1	RI M3 000 04 005	M-5000-4163	SA3			4,0	5,0		M3/M2	0,5
2	RI M2 000 04 005	-	-			4,0	5,0		M2/M3	0,5
3	RI M2 000 04 007	M-5000-4164	SA2			4,0	7,0		M2/M3	0,5

Thread M3/M2

Material Stainless steel

Special designs on request.


Pin tool

Pos.	itp Order No	analogue Renishaw	Short Desig.	DK	ML1 ML	DG D	L	DS1 DS	EAL B	Weight g
1	MI MO 012 00 023	M-5000-3540	-			1,2	23,0			

Thread M2/M3

Material Stainless steel

Special designs on request.

